

ECDIS DM-800E – for easy retrofit installation



Danelec Marine develops, produces and distributes maritime electronic solutions, including ECDIS (Electronic Chart Display & Information System), and is a well-established company with a strong position in the maritime market.

ECDIS DM-800E is a new system by Danelec Marine, which is **ideal for installation on existing ships**, and features a combination of **user-friendly electronic sea charts from Jeppesen Marine** as well as **innovative state-of-the-art technology**.

The ECDIS DM-800E makes navigation easy and significantly improves safety at sea. The system offers precise information about the position of the ship, and includes intuitive route planning functions, ensuring optimal navigation routes, which in turn leads to reduced fuel consumption.

Furthermore the sea charts can easily be updated via the C-MAP Update Service, which minimizes time-consuming and costly efforts that are associated with the necessary and mandatory updating of sea charts.

Ideal for retrofit installation

DM-800E will be Wheelmark-approved, and complies with the requirements enacted by the IMO regarding the installation of ECDIS on existing ships.

Ship type	Size	Installation mandatory from
Passenger vessels	> 500GT	Mid 2012 (new) 2014 (existing)
Tankers	> 3000GT	Mid 2012 (new) 2015 (existing)
Cargo vessels	>10000GT	Mid 2013 (new) 2018 (existing)
Cargo vessels	> 3000GT	Mid 2014 (new)
Cargo vessels	>50000GT	Mid 2016 (existing)
Cargo vessels	>20000GT	Mid 2017 (existing)

ECDIS DM-800E has been developed specifically for retrofit installations, and has apart from the well-known advantages of ECDIS, a number of other advantages and services.

Jeppesen Marine C-MAP Charts, innovative and user-friendly

The sea chart distribution and information system is developed by Jeppesen Marine, a company well known for its unique sea chart solutions. The innovative user application is especially notable, as it guarantees an easy and intuitive use of the system. Moreover, the system also features more advanced functions, such as alarm systems alerting the user of possible collisions and groundings, and functions reducing fuel consumption and unforeseen interruptions.

State-of-the-art technology

ECDIS DM-800E features a modular design and can be delivered either as a stand-alone system, or built into a console. This modular and flexible construction makes the system well suited for all types of existing ships, and makes installation and maintenance of DM-800E both easy and economical.

The monitor has been specifically developed for the maritime market, and the computer itself is extremely compact and designed specifically for ECDIS ensuring that it can easily be connected to radars for instance.

Finally, the console – with its ergonomic design – is both streamlined and modern, and can be delivered with monitors of varying sizes.

Recognizing the importance of global support, Danelec Marine has established a worldwide network of trained sales- and service-distributors, enabling timesaving and cost effective installations, maintenance and annual performance tests.



ECDIS DM-800E

- **Easy, simple and cost effective installation**
 - Compact and modular design – fits any ship.
 - Computer specifically developed for ECDIS.
- **Intuitive and user-friendly**
 - Optimised for Jeppesen/C-Map sea chart solutions.
 - Other services are available, such as weather information and route planning, collision avoidance.
- **Service friendly**
 - Modular design – makes service simple and easy.
 - Supported by Danelec Marine's world wide service network.

The Danelec Marine ECDIS DM-800E provides the professional mariner with a powerful navigation solution with vital voyage information.

Jeppesen Marine C-MAP Charts is developed on the basis of many years of experience, and today, Jeppesen Marine is one of the leading players in the field of software- and chart-solutions for the maritime, as well as the aviation industry.

The electronic sea chart solutions are extremely intuitive and user-friendly, and meet the increasing demands for both resource optimisation and safety, while improving and simplifying work on all bridges.



• Precise real time positioning and route monitoring including information such as:

- Data from interfaced sensors, gyro, log, GPS and Echo sounder.
- AIS information with call sign display.
- ARPA target information.
- Vessel track.
- Heading indicator.
- + Much more.

• Advanced route planning function

- Automatic harbour-to-harbour route layout based on own ship.
- Voyage information.
- Safety and turn parameters.
- Check route function.
- Upload route to autopilot.
- Graphical on-screen route plan editing.



• Radar overlay

- Raw radar video can be displayed on top of the electronic chart.
- On screen radar control.

• Integrated weather forecast information

- Pressure.
- Wind speed and direction.
- Significant height of waves.
- Tidal information (height, direction, period).



• Alarm functions

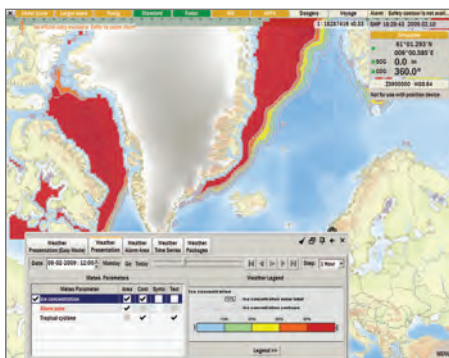
- Audio and visual alarms to alert users of potential groundings, collisions, cross track distance range being exceeded and/or the loss of sensor data.

• Chart corrections

- Simple, low cost update and maintenance of charts via internet, email or DVD

• Fuel saving




- The DM800E may help to reduce business interruptions due to weather or other factors that could impede the progress of a voyage, and together with the voyage-planning tool it helps reduce fuel consumption.



• Intuitive menu structure for easy operation with “built-in” user manual and on-line help

- Weather data
- Recording and playback of voyage data recording

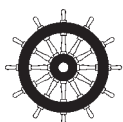
Specifications

Console	Weight & Dimension	Specifications	
	Dimensions: (W x H x D) 64x135x74 cm Weight: 128 kg.	Complete ECDIS console including: ECDIS computer Monitor Keyboard / trackball	
ECDIS Main Unit	Weight & Dimension	Specifications	
	Dimensions: (W x H x D) 35x29x21 cm Weight: 7.5 kg.	Power: AC power 110V-230V Built-in DVD Drive Interfaces: 12 Serial channels (2 x 61162-2, 10 x 61162-1) 4 Ethernet channels 8 USB DVI /VGA	
Monitors	Weight & Dimension		
	19,0" Monitor 47x42x7 cm / Flush mounting 49x47x45 cm /with stand & turntable Weight: 11 kg. & 14 kg. with stand & turntable	21.3" Monitor 56x46x8 cm / Flush mounting 56x51x49 mm / with stand & turntable Weight: 14 kg. & 17 kg. with stand & turntable	23.1" Monitor 60x53x8 mm / Flush mounting 62x57x55 mm / with stand & turntable Weight: 18 kg. & 23 kg. with stand & turntable
General Specifications monitors	Power: AC power 110V-230V & DC power 24V Waterproof: IP66 & IP67 Inputs: DVI-I, VGA, Composite video, S-Video		
Keyboard / trackball	Weight & Dimension	Specifications	
	Dimensions: (W x H x D) 48x22x6 cm Weight: 3,5 kg.	50 mm trackball, black epoxy resin ball Power requirements : directly from PS/2 or USB port sealing IP65 static	

Danelec Marine

Since 1982, Danelec Marine has specialised in innovative, advanced technological solutions for the maritime industry. Through the years, Danelec Marine has delivered advanced data solutions to the Royal Danish Navy, among many others. In 2002, Danelec Marine introduced the first

generation of VDR and S-VDR products, making Danelec Marine a leading competitor in the field of innovative technology for the maritime market. Danelec Marine's products are always high quality, user-friendly and easy to install and maintain.



DM-800E will be Wheelmark-approved, and complies with the requirements enacted by the IMO regarding the installation of ECDIS on existing ships.